

Mixer Channel Sheet - 32Ch Input list

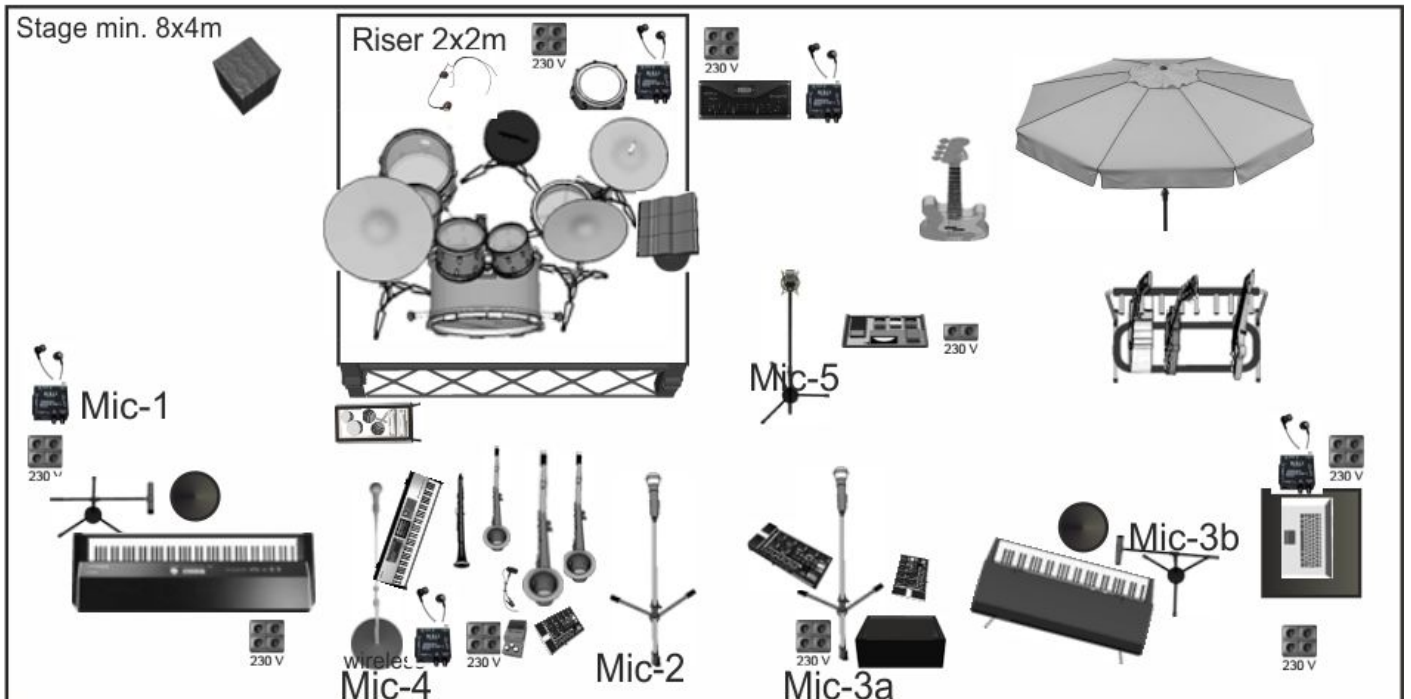
CH	Instruments/Vocals	Microphon	OW N!
	<u>Stagebox - Drum Riser:</u>		
1	Drums	BD - in	BD - TG D71 X
2	Drums	Snare top	BD-TG D35 X
3	Drums	Snare bottom	SM 57 X
4	Drums	Hihat	BD-TGi 53c X
5	Drums	Floor Tom 1	BD-TGX-58 X
6	Drums	Floor Tom 2	BD-TGX-58 X
7	Drums	Floor Tom 3	BD-TGX-58 X
8	Drums	High Tom 4	BD - TG D58c X
9	Drums	Roto Tom	BD . TG i52d X
10	Vocal - Drums	VOCAL	TG-X 58 X
11	Drums	OVHD L	BD-MC930 X
12	Drums	OVHD R	BD-MC930 X
13	Drum-Pad-L	Roland	DI-BOX X
14	Drum-Pad-R	Roland	DI-BOX X
15	Bass	AMP-Mod.	DI-BOX X
16	Vocal - Bass	VOCAL - Bass	Shure-SM-58 X
	<u>Stagebox - stage left:</u>		
17 (1)	Git-L - front Stage left	AXE FX-2	DI-OUT X
18 (2)	Git-R - front Stage left	AXE FX-2	Di-OUT X
19 (3)	Wurlitzer / Korg Kross L - front Stage left	DigiT RP 350	DI-OUT X
20 (4)	Wurlitzer / Korg Kross R - front Stage left	DigiT RP 350	Di-OUT X
21 (5)	Organ L - front Stage mid	Yamaha Reface YC	DI-BOX X
22 (6)	Organ R - front Stage mid	Yamaha Reface YC	DI-BOX X
23 (7)	Stage-Piano-L	Korg Kronos	DI-BOX X
24 (8)	Stage-Piano-R	Korg Kronos	DI-BOX X
25 (9)	Vocal - front Stage right	Shure	SM-58/Beta58 X
26 (10)	Vocal Heiko - front Stage mid	Shure	Beta 58 X
27 (11)	Vocal Pino - front Stage mid & left	Sennheiser (2x)	e835 X
28 (12)	HARP	Shure	SM 58 X
29 (13)	Tenor/Alt-Sax - front Stage mid	Beyerdynamic	BD-OPUS 82 X
30 (14)	Clarinet/Sopr.-Sax-frontStage mid	Beyerdynamic	TG i50d X
31 (15)	Stage-Mic - Presenter	Shure Wireless	SM58/Beta58 T
32 (16)	-	-	- X

X = Band brings it's own microphones to the venue!

T = PA Sound Company has to provide at the venue!

Mixer Channel Sheet - 16 CH output list (2x8)				
CH	Stagebox - 1 side	OUTput		
1	InEar - Thomas - L (Keys,Piano)	1		
2	InEar - Thomas - R (Keys,Piano)	2		
3	InEar - Pino - L (Guitar, Wurlitzer)	3		
4	InEar - Pino - R (Guitar, Wurlitzer)	4		
5	InEar - Heiko - L (Sax)	5		
6	InEar - Heiko - R (Sax)	6		
7	Main Left	7		
8	Main Right	8		
	<u>Stagebox - 2 drum-riser</u>			
09 (1)	InEar - Jürgen - L (Bass)	1		
10 (2)	InEar - Jürgen - R (Bass)	2		
11 (3)	InEar - Wolfi - L (Drums)	3		
12 (4)	InEar - Wolfi - R (Drums)	4		
13				
14				
15				
16				

Stageplot - Century's Crime



Drum Riser to be provided: 2m x 2m, min. 0.40m high

All over Stage height: minimum: 0,8m

Sound

- The **FOH** position must be central, of a single storey and located sufficiently far away from the PA.
- The **PA** must be of sufficient size to be professional for »**Century's Crime**« requirements and the room adequate so that the sound quality can be distortion-free, at minimum 105db SPL A-weighted, when measured from a central position at FOH.
- The PA should be flown wherever possible and be ready for operation, upon arrival of our FOH technician.
- Delay lines, etc. must be observed - In / Out Fill's, as we attach great importance to a high quality PA! - Please use only high quality components – Line arrays are preferred!! - We prefer to use the following PA systems: L-Acoustics, d&b, JBL, Audio-Zenit.

We will bring our own Digital Mixing Console incl. Stageboxes!

**We need 2x CAT-5 or CAT-6 Network Cable max.100m, shorter is better, FOH to Stage!
Also a short 20m CAT-5 or CAT-6 Network Cable on Stage!**

No Monitors/Wedges needed! The band uses InEars!

We need 2 Wireless InEar Monitor Systems: Sennheiser EW 300 IEM spare!

Some spare Microphones: (SM-58, Beta-58, Beta 91A, SM-57, SM81)

We need 7 Boomstands long arm!

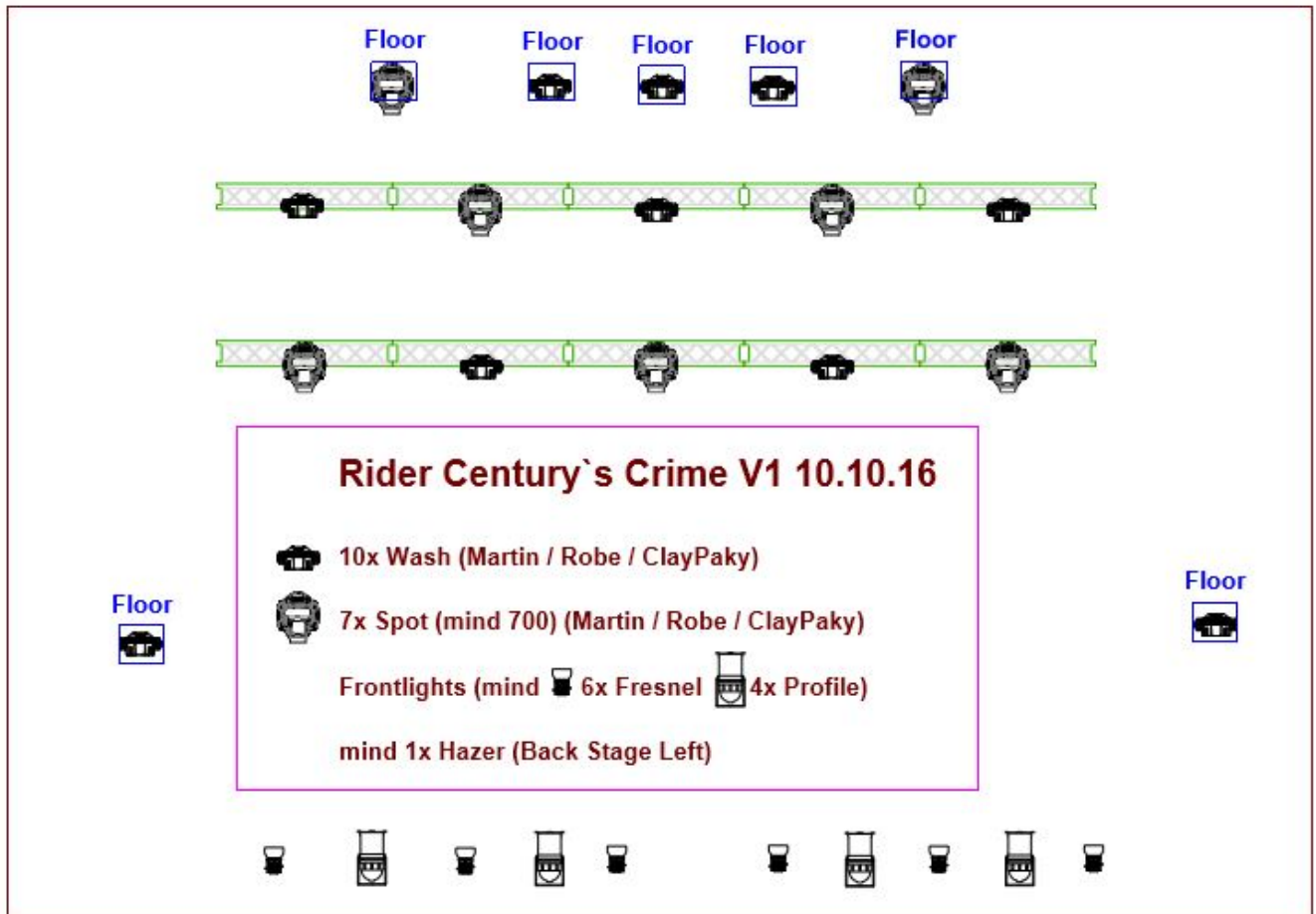
We need 30 Cables NF-XLR different lenght!

Power sockets as you can see on the stage-plot, we need really a lot!

Contact - Sound: Pino +49 (0) 151 20123212

LIGHTING:

The lighting concept may have to be adapted and discussed depending on the size of the event, IN ADVANCE!



Backtruss and Floor:

10x Wash (Martin / Robe / ClayPaky)
7x Spot (mind 700) (Martin / Robe / ClayPaky)

Fronttruss:

mind 6x Fresnel 4x Profile)

1 Free DMX Line + 1 Cat5 Network - Cable (100mbit) from FOH to Stage

mind 1x Hazer (Back Stage Left)

We need a professional Light operator!

Lights must be up and running on »get in« of the Crew 1 qualified lighting assistant / technician on »get in« of the Crew

Movinglights must have CMY or RGB The Stage must have a black backdrop and no publicity on stage.